

11.02.19

Rule: Word list words



Spellings	Practise the word using the Look, Say, Cover, Write and Check. Then, in the space below, write a sentence for just five spellings containing a relative clause. E.g. My neighbour, who lives at number 24 , returned my bin to my garden.	
neighbour		
nuisance		
appreciate		
accommodate		
opportunity		
parliament		
persuade		
physical		
prejudice		
privilege		
profession		
programme		
pronunciation		
queue		
recognise		

Homework:

Maths- complete the arithmetic questions - try to set yourself a time limit of 30 minutes (in the SAT arithmetic paper you will have 36 questions to do in 30 minutes).


Reading - carefully read the text given to you and complete the reading comprehension. Don't forget to log on to Read Theory to increase your knowledge points.

Maths Homework: Complete the arithmetic test

Section 1 Test 5

A	ANSWER
1 A FIFTY – 13p	_____ p
2 500 = _____ tens	_____ tens
3 $2 - \frac{2}{3}$	_____
4 186 cm = _____ m _____ cm	_____ m _____ cm
5 2200 + 800	_____
6 167 mm = _____ cm _____ mm	_____ cm _____ mm
7 11.16 a.m. to noon = _____ min	_____ min
8 210×10	_____
9 $15 - 6 = ___ + 3$	_____
10 77p + 25p	_____ £
11 $(5 \times 9) + 16$	_____
12 $(72 \div 9) + (0 \div 3)$	_____

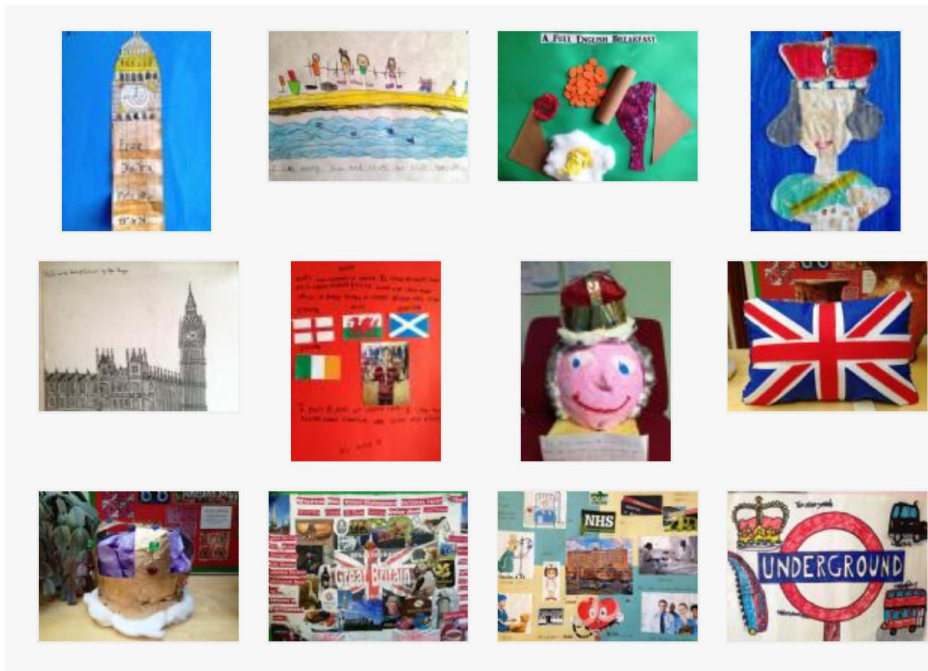
B	ANSWER
1 Find the sum of £1.80 and £0.18.	_____ £
2 Subtract 40 mm from 15 cm.	_____ cm
3 Write in figures three thousand and fifty-nine.	_____
4 Write in figures the time which is $4\frac{1}{4}$ hours after midday. Use a.m. or p.m.	_____
5 Multiply 9 by 90.	_____
6 Add £0.19 to £2.36.	_____ £
7 Find the difference between £5 and £3.44.	_____ £
8 Write in figures the number which is half of nine thousand.	_____
9 Find in cm, $\frac{3}{10}$ of a half metre.	_____ cm
10 What is the product of 5 and 75?	_____
11 What must be added to 13p and 16p to equal 40p?	_____ p
12 Find the cost of one if 10 cost £25.	_____ £

C	ANSWER				
1 Find the cost of $1\frac{1}{2}$ kg at 28p per kg.	_____ p				
2 <table border="1" style="display: inline-table; vertical-align: middle;"> <tr><td>3 TENS</td></tr> <tr><td>14 FIVES</td></tr> <tr><td>8 TWOS</td></tr> <tr><td>4 pennies</td></tr> </table> Olivia exchanged these coins for TWENTIES. How many did she get?	3 TENS	14 FIVES	8 TWOS	4 pennies	_____ TWENTIES
3 TENS					
14 FIVES					
8 TWOS					
4 pennies					
3 How far will a cyclist travel in $\frac{1}{4}$ hour if he cycles at 18 kilometres per hour?	_____ km				
4 How many months in a year have 31 days?	_____				
5 A man travelled 400 km in 3 days. On the first day he travelled 130 km and on the second day 228 km. How far did he travel on the third day?	_____ km				
6  What fraction of the circle is (a) shaded (b) unshaded?	(a) _____ (b) _____				
7 Tape costs 12p per $\frac{1}{2}$ metre. Find the cost of 125 cm.	_____ p				
8 By how much is 25p divided by 5 less than 25p multiplied by 8?	_____ £				
9 Sundeep saved 55p each week for 8 weeks. How much short of £5 has he saved?	_____ £				
10 Sophie had 45p left after spending £1.08 and £0.27. How much had she at first?	_____ £				
11 <table border="1" style="display: inline-table; vertical-align: middle;"> <tr><th colspan="2">SILVERSIDE SCHOOL</th></tr> <tr><td>NUMBER ON ROLL</td><td>BOYS 33 GIRLS 29</td></tr> </table> The children were placed in two mixed classes of equal numbers. How many children were there in each class?	SILVERSIDE SCHOOL		NUMBER ON ROLL	BOYS 33 GIRLS 29	_____
SILVERSIDE SCHOOL					
NUMBER ON ROLL	BOYS 33 GIRLS 29				
12 Write the missing signs +, -, × or ÷ in place of ● and ▲. $9 \bullet 5 \blacktriangle 6 = 8$	_____				

Half Term Homework

What Makes Great Britain Great?

Your homework this half term is to answer: 'What Makes Great Britain Great?' in a creative way e.g. you could go on a visit, create a piece of artwork, cook a delicious dish etc. Please see ideas below.



As always, please post a photo on our homework blog. We look forward to seeing your photos!

Have fun