

Moving to Year R

We are really looking forward to seeing you in September.
Here is some Year R information to help you to settle into your new class.

Year R Class Teachers



Base 5

Monday, Tuesday and
Wednesday



Mrs Sturrock
Base 5

Thursday and Friday



Miss Hailey
Base 6

Other staff who work in Year R



Mrs Bissell
Teaching Assistant



Miss Hodgetts
Teaching Assistant



Mrs Cleobury
Teaching Assistant



Mrs James
Teaching Assistant

Year group entrance and lining up

On the other side of this sheet you will see a map which will show you the entrance to use for your new class.

- Water bottle
- Packed lunch (if required: Starting from Friday 8th September)

P.E. will be a Tuesday (Outdoor PE) and Thursday (Indoor PE). Starting Week 2. Please wear PE kits on these days.

Forest School days to be confirmed, starting Week 3. Please bring kits and wellies in a separate bag for this day. More information to follow.

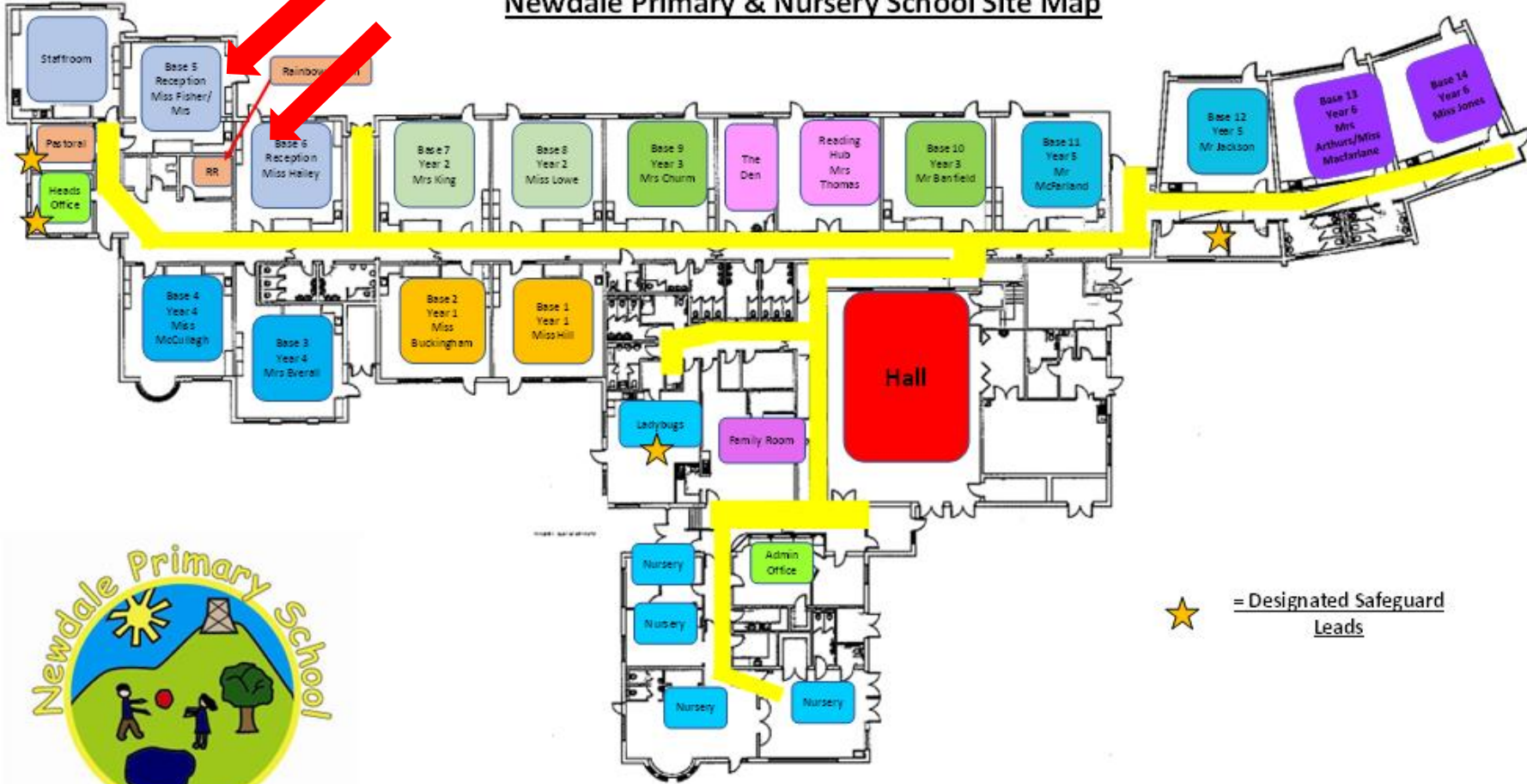
Homework

It will really help your child to make excellent progress if you read nightly with them. We will change books daily, providing a 'share a story' book which is intended to be read together to encourage reading for pleasure. In addition to this we also set Parents as Partners tasks. These will be a variety of fun and practical tasks that relate to the learning going on in school at that time. It provides the opportunity for your child to extend their knowledge and skills as well as keeping you up to date of what they have been or will be doing soon.

Miss Fisher's/Mrs Sturrock's Classroom

Miss Hailey's Classroom.

Newdale Primary & Nursery School Site Map



★ = Designated Safeguard Leads