



Dear Parents/Carers,

Welcome to issue 4 of the Newdale SEND Newsletter. It has been another busy half term, with assessments taking place throughout the school. These assessments help to form the next steps of the support we put in place for your child and you can expect to receive updated SEND targets soon.

As always, please get in touch if you require any additional support via newdalesendco@taw.org.uk

What is an Education, Health and Care Plan (EHCP)?

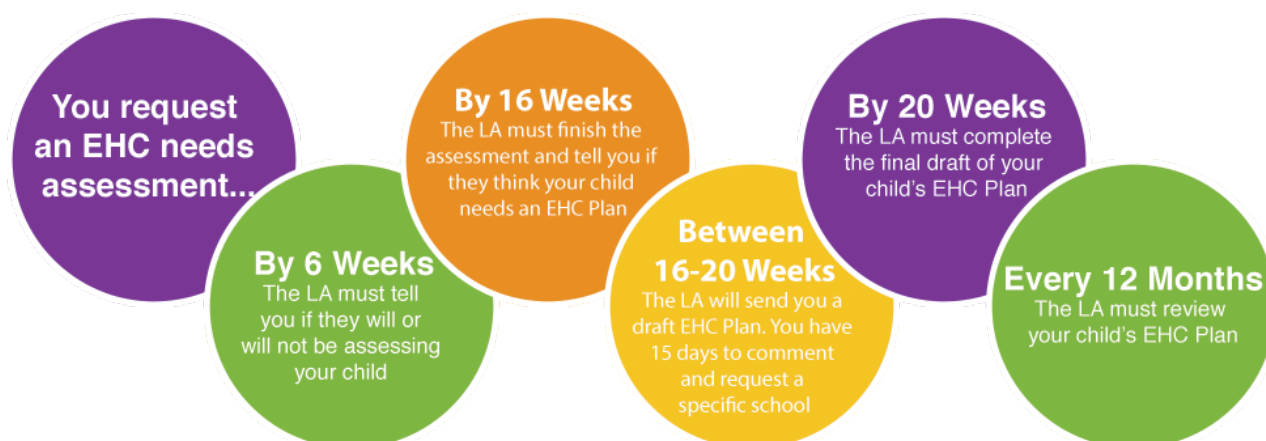
An EHCP (Education, Health and Care plan) is a legal, personalised document which sets out the education, health and social care needs of a child.

An EHCP is for any child or young person that has a significant and complex Special Educational Need or Disability. An EHCP is required when a child's needs cannot be met by the usual support that is available to them in their school or setting.

Most children with SEND will have their needs met without the need for an EHCP. This is called SEN support, when the resources available within school are able to meet their needs. In some cases, a child may not make expected progress, despite the best efforts to identify, assess and meet the special educational need. In these cases, an EHCNA may be considered - school or parents can complete it and the local authority will then decide to move forward with the assessment or not.

It should not take more than 20 weeks from requesting an assessment to a final EHC plan being issued.

When issued, an EHCP should provide support up to the age of 25 in order to assist with further education, training and entry into the workplace.



For further advice and information, please scan the QR code.



Intervention Spotlight



This intervention is designed for children who find reading difficult. This includes weak readers who struggle to decode, or those with dyslexia. Even though the steps taken are small, students can clearly measure progress right from the first page. Confidence and self-esteem are boosted as a result. Regardless of the nature of students' literacy problems, they can be taught to read using Toe By Toe.

Meet the Team

Mrs Mansell SEND Support



Mrs Mansell has recently joined the Inclusion Team. She is highly experienced in working with children with a range of additional needs, having come to us from The Bridge.

She has loved working at Newdale so far and has mostly been working with children on a 1:1 basis or within small groups to target specific needs. She is very friendly so please say hi if you see her about!



**From
£3
per person**

PODS Easter Activity Sessions

26/3/2024	Legoland and Sealife Trip <small>Tickets include coach transport, entrance and child ticket also includes packed lunches for children and young people.</small>	8:30am-8pm	£10 per person
28/3/2024	Easter Crafts and Egg Hunt Session <small>Easter crafts and egg hunt sessions are taking place at the PODS Hub. Child ticket includes lunch for children and young people.</small>	10am-12pm 1pm-3pm	£3 per child/young person
4/3/2024	Hoo Zoo Trip <small>Tickets include entrance and child tickets also include packed lunches for children and young people.</small>	10am-2pm	£5 per person
5/3/2024	Blists Hill Trip <small>Tickets include entrance and child tickets also includes lunch for children and young people.</small>	10am-1pm	£3 per person

How to request a session

Request form opens at 10am Saturday 17th February, please scan the QR code to complete the booking request. The form closes 5pm Thursday 22nd February 2024.

Please note that you will only be allocated one session and will be informed by 23rd February if your request has been successful.



More Info
jeannie@podstelford.org
01952 458047

Inclusive leisure SEND programme Telford & Wrekin Council

Mon	Tue	Wed	Thu	Fri	Sat	Sun
Abraham Darby Sports and Leisure Centre						
3.30pm / 5.30pm / 6pm	4pm	3.30pm		3.30pm	11am	10am
SEND Swim4Life Lessons	SEND Swim4Life Lessons	SEND Swim4Life Lessons		SEND Swim4Life Lessons	SEND Swim4Life Lessons	SEND Swim4Life Lessons
					6pm-7pm	12.15-1.15pm
					Ican2 swim session	Family Disability Swim
Oakengates Leisure Centre						
6pm-6.30pm						
SEND Swim4Life Lessons						
Telford Ice Rink						
				5pm-6pm		
				SEND Skate		
Telford Soft Play @ Telford Ice Rink						
4pm-5.30pm		5pm-6.30pm		10am-11.30am		10am-11.30am
Junior SEND Session		SEND Session		SEND Session		SEND Session
6pm-8pm						
Senior SEND Session						
Telford Snowboard and Ski Centre						
		4.30pm-5.30pm				
		My Options Ski and Tubing session				
Wellington Civic and Leisure Centre						
					12noon	5pm
					SEND Swim4Life Lessons	Wrekin Special Swimming Club SEND Session

Newdale Primary School and Nursery OFSTED report May 2023

"Pupils with SEND and disadvantaged pupils are well supported to access the same curriculum as other pupils. As a result, pupils achieve highly. Parents are happy with the school."